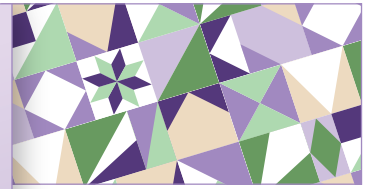


Created by Deb Tucker
Studio180Design.Net

BlockBusters

Hidden Blooms

Made using Studio 180 Design's Tucker Trimmer® I & Corner Beam® tools, with Shaded Four Patch & Sliver Technique Sheets



BlockBusters 2018: #35

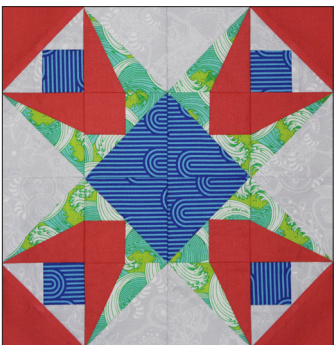
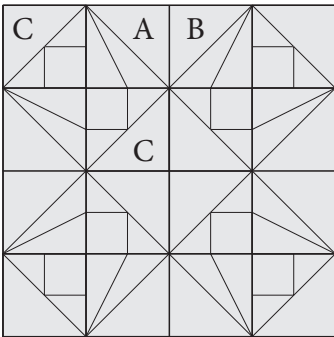
Difficulty: ★★☆☆☆

All the information you need to make the units in this block can be found on the Sliver and Shaded Four Patch technique sheets. Along with the technique sheets you will need the Corner Beam® and Tucker Trimmer® I to make your Sliver and Shaded Four Patch units. There are charts, step by step graphics, and directions. Use the table above to find the finished size of the unit you want to make. Then work your way through the technique sheets to create your units.

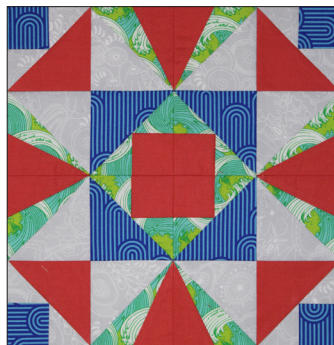
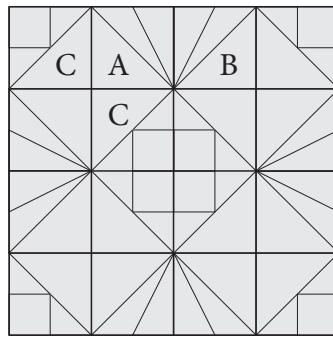
Isn't it amazing how just by rotating the units you can create three very different blocks? The fabrics are all in exactly the same position in each unit and each unit is in the same position, just rotated. So no need to pick your block until you have all your units made. When constructing your units there are several things that you need to consider. You will need to make 4 Sliver units that slant right and 4 Sliver units that slant left, so be sure to pay attention to the corner that you are trimming off in step 2 of the technique sheet. When constructing the Sliver units consider pressing the seams open, it will help to reduce the bulk when you sew the units into the block. Construct the Shaded Four Patch units following the instructions on the technique sheet and the seams will be positioned as needed.

Block Options

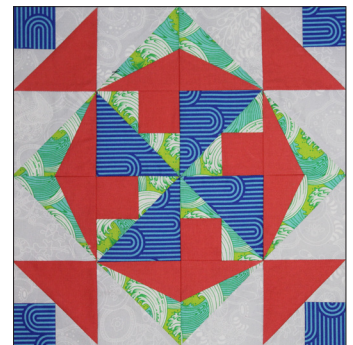
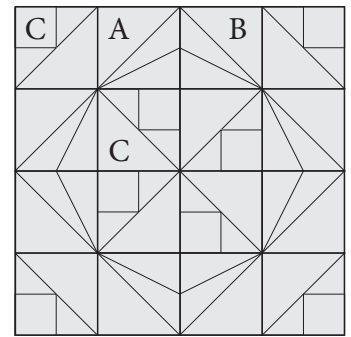
Block 1



Block 2

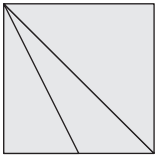


Block 3

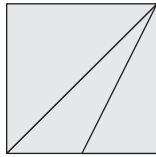


Unit Summary

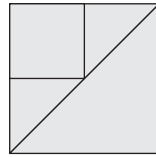
Unit A



Unit B



Unit C



Cutting Chart

Unit	# of units required	8" Block	12" Block	16" Block
A: Sliver, Slanted Left	4	2" finished size 2½" trim size	3" finished size 3½" trim size	4" finished size 4½" trim size
B: Sliver, Slanted Right	4	2" finished size 2½" trim size	3" finished size 3½" trim size	4" finished size 4½" trim size
C: Shaded Four Patch	8	2" finished size 2½" trim size	3" finished size 3½" trim size	4" finished size 4½" trim size