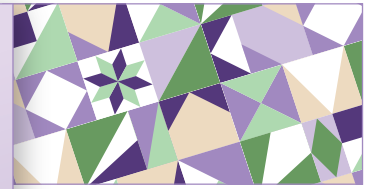


Created by Sarah Furrer  
Studio180Design.Net

# BlockBusters

## Hellebore

Made using Studio 180 Design's V Block® and Square Squared® Tools and the Little Houses Technique Sheet



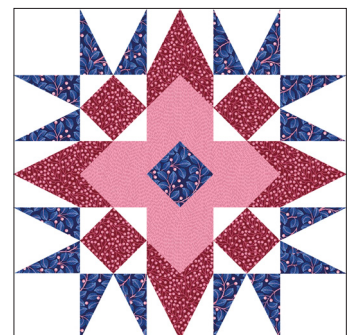
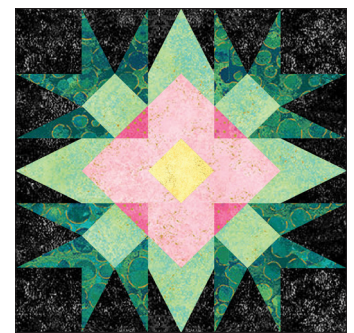
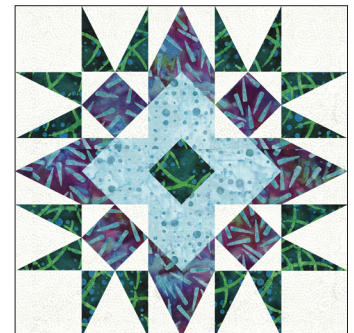
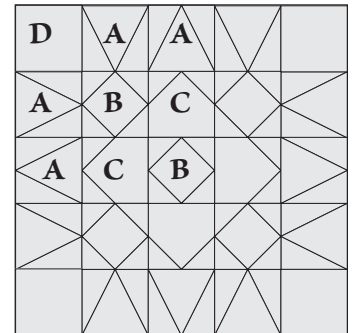
BlockBusters 2024 #88

Difficulty: ★★★★★

Everything you need to know to make the units required for this block can be found in the instructions that came with the **Square Squared®** and **V Block®** tools and the Little Houses technique sheet. There are charts, step-by-step graphics, and directions. Use the charts to find the information you need for the finished size of the units you want to make, and follow it through to find what you need to cut to make those units. Then work your way through the instructions.

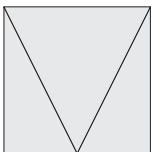
For the V Block units, you will make 8 units that are the same that will be used to create the “skinny” outer points. For those, we used our background fabric for the center triangle and a color for the side triangles. In the four units that are used in the center north, south, east and west edges (the “fat” outer points), the center triangle of the V Block is the colored one, with the side triangles made from background fabric. Consider matching the center triangle to the small triangles on your Little House units. This will give you the same look that we have here.

For the Square Squared units, you will want to make 1 unit that is different from the others for the center square. The other 4 we made all the same, and you can choose to color them however you want. Consider pressing your seams open on all your units. This makes it easier to match your seam intersections and will ensure nice crisp points.

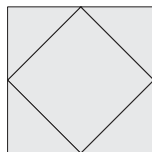


### Unit Summary

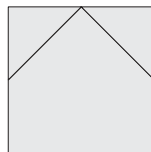
Unit A



Unit B



Unit C



Unit D



## Cutting Chart

Unit	# of units required	5" Block	10" Block	15" Block
A: V Block	12	1" finished size 1½" trim size	2" finished size 2½" trim size	3" finished size 3½" trim size
B: Square Squared	5	1" finished size 1½" trim size	2" finished size 2½" trim size	3" finished size 3½" trim size
C: Little Houses	4	1" finished size 1½" trim size	2" finished size 2½" trim size	3" finished size 3½" trim size
D: Squares	4	1½" square cut size	2½" square cut size	3½" square cut size

## Color Audition Chart

